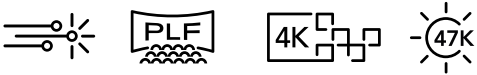


# CP4445-RGB

Premium large format auditoriums | Advanced format cinema | Event cinema

**World's first advanced format cinema projector featuring Christie ReaLaser™ technology for screens up to 103 feet wide**



## Key features:

- › **Hyper realism** - new system architecture that displays content without motion blur and artifacts
- › **Enhanced Wavelength Diversity (EWD)** - utilizing MPD technology to improve image quality on all screen types
- › **Ultra-fast processing** - HDMI 2.0 and 4x 12GB SDI inputs for 1.06G pixels per sec
- › **Long-lasting light source** - over 50,000 hours of optimal performance
- › **Low maintenance** - sealed optics for protection against dust ingress
- › **Best-in-class operational efficiency** - 11.2 lumens per watt

CHRISTIE  
ReaLaser™

Advanced laser light source for accurate reproduction of DCI content

CineLife+™

Adds ultra high frame rate providing each eye 2K 120fps, 4K 120fps, 4K 3D 60fps

## TEMPERATURE CONTROL

External liquid cooling for optimal thermal efficiency



## Specifications **Christie CP4445-RGB**

<b>Brightness</b>	nominal	• Up to 47,000 lumens with HB lens, 35,000 lumens with UHC lens <sup>1</sup>
	lifetime	• >50,000 hours <sup>2</sup>
<b>Contrast ratio</b>		• Up to 6000:1 sequential with UHC lens, 2000:1 with standard HB lens
<b>Digital micromirror device</b>		• 1.38" Enhanced 4K 3-chip DMD DLP Cinema® • 4096x2160 (4K)
<b>Color gamut</b>	native gamut	• >95% Rec 2020 coverage
<b>Processing electronics</b>		• Christie® CineLife+™ Series (Series-2 IMB compatible) <sup>3</sup> • HDMI 2.0 x2 • 4K120 fps <sup>4</sup> • 1G Ethernet x1 • 12G SDI x 4 • DisplayPort 1.2 x2
<b>Lens mount configuration</b>		• Fully motorized Intelligent Lens System (ILS™)
<b>Lenses</b>		• HB and UHC: 0.9:1 (HB) / 1.13-1.66 / 1.31-1.85 / 1.45-2.17 / 1.63-2.71 / 1.95-3.26 / 2.71-3.89
<b>Power input requirements</b>		• Input A and Input B: 200-240 VAC @ 50-60Hz, 16A max • UPS Input: 200-240 VAC @ 50-60Hz, Single phase, 10A max • Chiller: 200-240 VAC @ 50-60Hz, 20A max
<b>Power consumption</b>		• 4185W <sup>5</sup> including chiller, max DCI brightness, @25°C 14,270 BTU/
<b>Heat Extraction</b>		• No heat extraction necessary. CFM requirements when used: • Projector 350 CFM min • Chiller 1340 CFM min
<b>Laser class</b>		• Class 1 – Risk Group 3
<b>Noise level</b>		• <70 dBA @ 25°C
<b>Environment</b>		• Ambient temperature: 15-30°C • Humidity (non-condensing): 20-80% • Altitude: <3000 m
<b>Dimensions (w/o lens)</b>	size (LxWxH)	• Projector head: 61.1x28.0x22.0" (1551.1x710.6x559.6mm) • Projector pedestal: 53.9x29.8x29.1" (1369.8x756.0x739.4mm)
<b>Weight</b>		• Projector head: 368lbs (167kg)
<b>Chiller dimensions</b>		• (LxWxH): 26.38x18.5x35.0" (670x470x890mm); 202lbs (92kg) • Chiller hose: 33ft (10m)
<b>Accessories</b>		• Rack mount pedestal • 50Hz chiller • 60Hz chiller • Chiller setup kit plumbing • Coolant <sup>6</sup> • Chiller setup kit ducts

<sup>1</sup> With Enhanced Wavelength Diversity (EWD).

<sup>2</sup> Subject to variables specific to each installation. Please see Christie's laser best practices guide for more information.

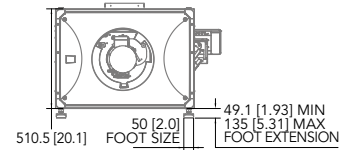
<sup>3</sup> Supports legacy Series 2 IMBs. A list of supported versions is available upon request.

<sup>4</sup> With the GDC SR-6400 IMB.

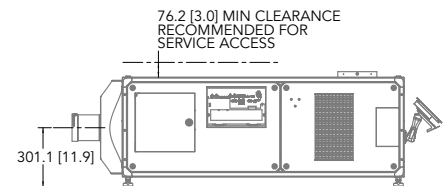
<sup>5</sup> Typical power consumption. May be impacted by environmental conditions.

<sup>6</sup> 10L bottle of 702 coolant. Requires 3 bottles per projector.

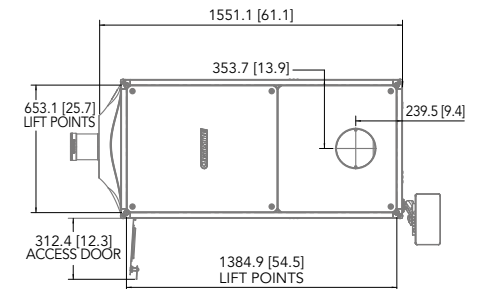
## Front view



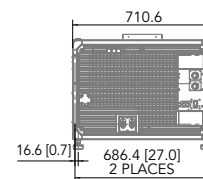
## Side view



## Top view



## Back view



### Corporate offices

### Worldwide offices

Christie Digital Systems USA, Inc. Cypress PH: +1 714-236-8610	Australia PH: +61 (0) 7 3624 4888	China (Shenzhen) PH: + 86 755 3680 7000	Mexico PH: +52 (55) 4744-1791	United Arab Emirates PH: +971 (0) 4 503 6800
Christie Digital Systems Canada Inc. Kitchener PH: +1 519-744-8005	Brazil PH: +55 11 3181-2952	Colombia PH: +57 (315) 652-9620	Singapore PH: +65 6877 8737	United Kingdom PH: +44 (0)118 977 8000
	China (Beijing) PH: +86 10 6561 0240	Germany PH: +49 221 99 512-0	South Korea PH: +82 2 702 1601	United States (Arizona) PH: +1 602-943-5700
	China (Shanghai) PH: +86 21 6030 0500	India PH: +91 (080) 6708 9999	Spain PH: +34 (0) 91 633 99 90	United States (Texas) PH: +1 469-757-4420

For the most current specification information, please visit [christiedigital.com](http://christiedigital.com)

Copyright 2023 Christie Digital Systems USA, Inc. All rights reserved. Our centers of excellence for manufacturing in Kitchener, Ontario, Canada and in Shenzhen, China are ISO 9001:2015 Quality Management System-certified. All brand names and product names are trademarks, registered trademarks or tradenames of their respective holders. "Christie" is a trademark of Christie Digital Systems USA, Inc., registered in the United States of America and certain other countries. DLP® and the DLP logo are registered trademarks of Texas Instruments. Performance specifications are typical. Due to constant research, specifications are subject to change without notice.  
CD3996-CP4445-RGB-Datasheet-Oct-23-EN-US

