
Software Release Notes

Video Wall Toolbox v2.1.1

This document provides update instructions and describes known and fixed issues in the Video Wall Toolbox version 2.1.1 for Ultra and Extreme Series display panels.

Affected products

The following products are affected.

- FHD493-XE
- FHD553-X
- FHD553-XE and FHD553-XE-H
- FHD553-XE-R and FHD553-XE-HR
- FHD554 series
- UHD654-X-HR

New in this release

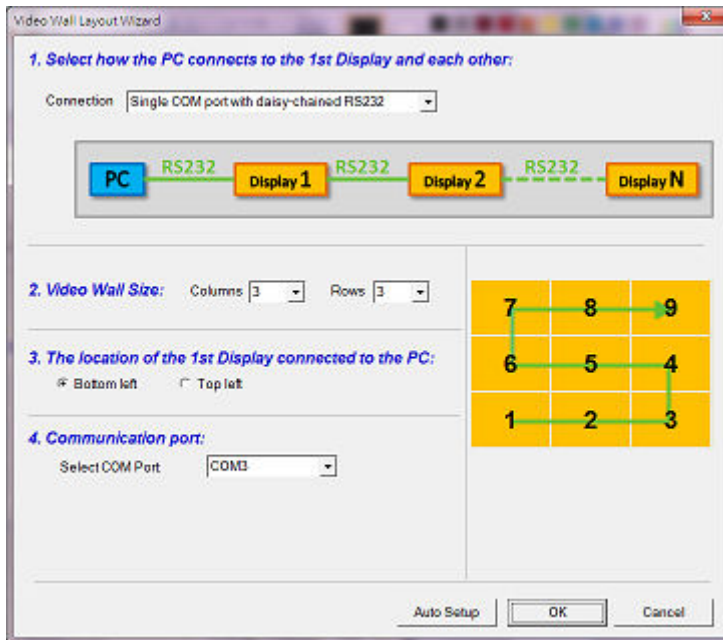
The 2.1.1 release introduces the following new features and changes:

- Renamed the display model FHD554-XZ to the FHD554 series.

Installing the Video Wall Toolbox application

Learn how to install and set up the Video Wall Toolbox application on the control computer.

1. Download the Video Wall Toolbox application from <https://www.christiedigital.com/>.
2. Connect the control computer to a display panel or video wall.
3. Verify that the baud rate for the RS232 connection on the control computer matches the baud rate of the display panel.
The default baud rate is 115200.
4. Launch The Video Wall Toolbox application.
5. To specify the size of the video wall, in the **Video Wall Size** fields, enter the number of columns and rows in your video wall.



6. Specify the location of the first display panel that is connected to the display computer.
7. Connect a computer to the first LCD panel in the video wall with RS232 or Ethernet.
8. To automatically assign Monitor IDs to all the display panels in a video wall, select **Auto Setup**.

Product documentation

For installation, setup, and user information, see the product documentation available on the Christie website. Read all instructions before using or servicing this product.

1. Access the documentation from the Christie website:
 - Go to this URL: <http://bit.ly/2V1wwX8>.
 - Scan the QR code using a QR code reader app on a smartphone or tablet.



2. On the product page, select the model and switch to the **Downloads** tab.

Technical support

Technical support for Christie Enterprise products is available at:

- North and South America: +1-800-221-8025 or Support.Americas@christiedigital.com
- Europe, Middle East, and Africa: +44 (0) 1189 778111 or Support.EMEA@christiedigital.com
- Asia Pacific (support.apac@christiedigital.com):

- Australia: +61 (0)7 3624 4888 or *tech-Australia@christiedigital.com*
- China: +86 10 6561 0240 or *tech-supportChina@christiedigital.com*
- India: +91 (80) 6708 9999 or *tech-India@christiedigital.com*
- Japan: 81-3-3599-7481
- Singapore: +65 6877-8737 or *tech-Singapore@christiedigital.com*
- South Korea: +82 2 702 1601 or *tech-Korea@christiedigital.com*
- Christie Professional Services: +1-800-550-3061 or *NOC@christiedigital.com*