

Using the Video Wall Toolbox

The Video Wall Toolbox application can be used to configure and control a single display panel or a video wall.

Use the Video Wall Toolbox to:

- The Video Wall Adjustment screen provides the same controls as the Multi-Display Control menu on a display panel.
- The Color Adjustment screen provides the same image quality controls as the Image Settings menu on a display panel.
- The Remote Control screen provides the same functionality as the hand-held remote control.

To use the Video Wall Toolbox application, the control computer must be running Windows 7 or later.

Affected products

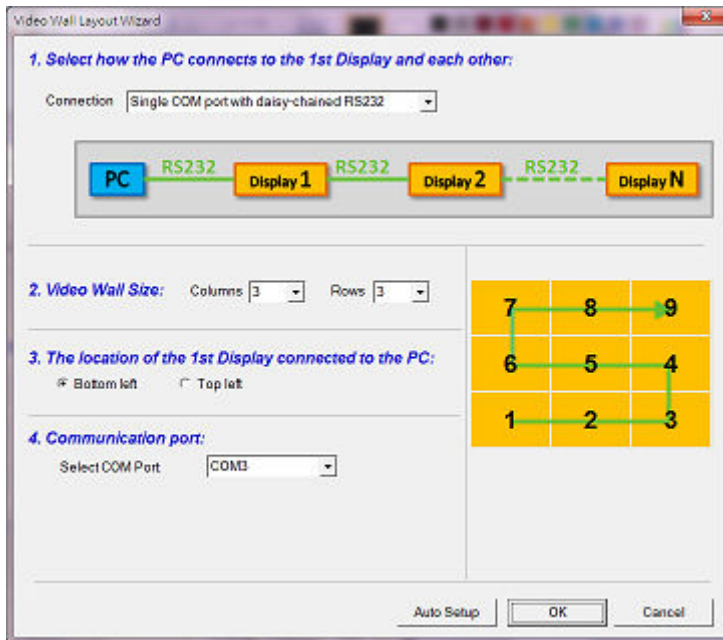
The following products are affected.

- FHD493-XE (P/N: 135-009100-XX)
- FHD554-XZ-H (P/N: 135-033107-XX)
- FHD554-XZ-HR (P/N: 135-032106-XX)
- FHD554-X (P/N: 135-046101-XX)
- UHD654-X-HR (P/N: 135-029102-XX)
- FHD553-XE (P/N: 135-007108-XX)
- FHD553-XE-H (P/N: 135-012104-XX)
- FHD553-XE-R (P/N: 135-008109-XX)
- FHD553-XE-HR (P/N: 135-013105-XX)
- FHD553-X (P/N: 135-023106-XX)

Installing the Video Wall Toolbox application

Learn how to install and set up the Video Wall Toolbox application on the control computer.

1. Download the Video Wall Toolbox application from <https://www.christiedigital.com/>.
2. Connect the control computer to a display panel or video wall.
3. Verify the baud rate for the RS232 connection on the control computer matches the baud rate of the display panel.
The default baud rate is 115200.
4. Launch The Video Wall Toolbox application.
5. To specify the size of the video wall, in the **Video Wall Size** fields, enter the number of columns and rows in your video wall.

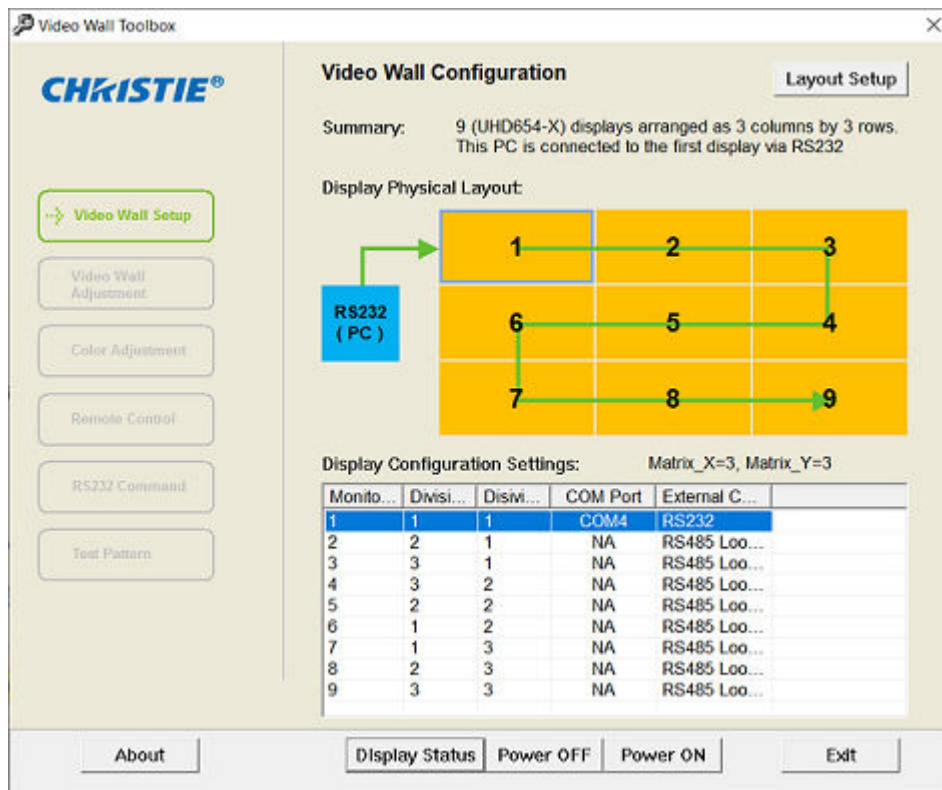


6. Specify the location of the first display panel connected to the display computer.
7. Connect a computer to the first LCD panel in the video wall with *RS232* (on page 3) or *Ethernet* (on page 3).
8. To automatically assign Monitor IDs to all the display panels in a video wall, select **Auto Setup**.

Wiring a video wall

Learn how to connect the LCD panels in a video wall together.

1. Connect a computer to the first LCD panel in the video wall with *RS232* (on page 3) or *Ethernet* (on page 3).
For information on how to connect the included CAT5 cables and control a video wall, refer to the LCD display panel user guide.
2. To control the video wall as a system, connect the included CAT5 cables between the RS485 inputs and outputs for all panels in the video wall, in the correct sequence.



Controlling the video wall using RS232

To control the video wall using RS232, connect the Windows PC to the RS232 port on the first display in the video wall.

Depending on the computer, this may require a USB to RS232 adapter. Consult the Christie video wall LCD product documentation for more details.

1. Before communicating with the video wall, in the Windows Device Manager verify the connection is to the correct COM port.
2. Select **Layout Setup**.
3. In the Connection list, select **Single COM port with daisy-chained RS485**.
4. Select the COM port.

If the wall has not been configured, use **Auto Setup** to lay out the wall and assign panel IDs. This operation assumes a multi-wall with a single input. If it is a multi-channel input configuration, turn off the Multi-wall function. The Auto Setup feature still assigns panel IDs.

Controlling the video wall using Ethernet

The video wall can be controlled using an Ethernet LAN connection.

To control the video wall using Ethernet, connect the Windows PC to the Ethernet port on the first display in the video wall. The Windows PC can be directly connected to the LAN port of the display, or this connection can go through a hub or switch. Consult the Christie video wall LCD product documentation for more details. For general questions concerning Ethernet communication, consult your IT manager.

1. Before communicating with the video wall, in the Windows Device Manager verify the connection is to the correct COM port.
2. Select **Layout Setup**.
3. In the Connection list, select **Single LAN port with daisy-chained RS485**.
4. Under Display IP address, enter the IP address of the first monitor in the video wall. By default, this address is 192.168.2.1.
If the wall has not been configured, use **Auto Setup** to lay out the wall and assign panel IDs.

Verifying communication

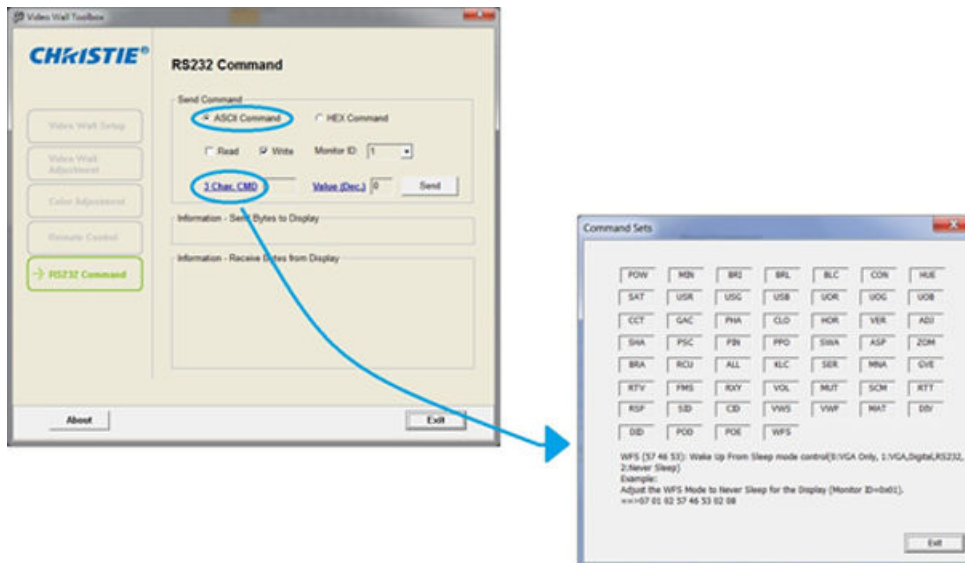
Verify there is communication with all display panels.

1. In the Video Wall Toolbox, select **Remote Control**.
2. In the Apply to area, select **All**.
3. In the OSD Menu area, select **Menu**.
The on-screen display (OSD) menu should be displayed on all monitors. If it is not displayed, verify the RS485 wiring and Panel ID numbers.

Entering RS232 commands in ASCII format

Learn how to send and receive RS232 commands using the Video Wall Toolbox application.

Use the RS232 Command screen to manually enter supported RS232 commands in ASCII format.



1. On the RS232 Command screen, under Send Command, select **ASCII Command**.
2. To select a command type, select **Read** or **Write**.
3. To select a command destination, from the **Monitor ID** list, select a display panel.
4. If entering a Read command, do one of the following.

- To manually enter a valid three-character command from the Serial Command List, in the **3 Char CMD** field, enter a command.
 - To choose a three-character command from a list of commands, select **3 Char CMD**. When you hover your mouse pointer over a command, a brief description of the command and an example in hexadecimal format appear at the bottom of the window. Click a command to select it.
5. If entering a Write command, do one of the following.
- To enter a decimal parameter value to send with the command, in the **Value (Dec.)** field, enter a value.
 - To change the parameter entry mode to Value (Hex) and enter a hexadecimal value, select **Value (Dec.)**.
6. Select **Send**.
- If the command is successfully executed, the command and the response from the target display panel appear in the window.

Entering RS232 commands in hexadecimal format

Learn how to enter RS232 commands in hexadecimal format using the Video Wall Toolbox application.



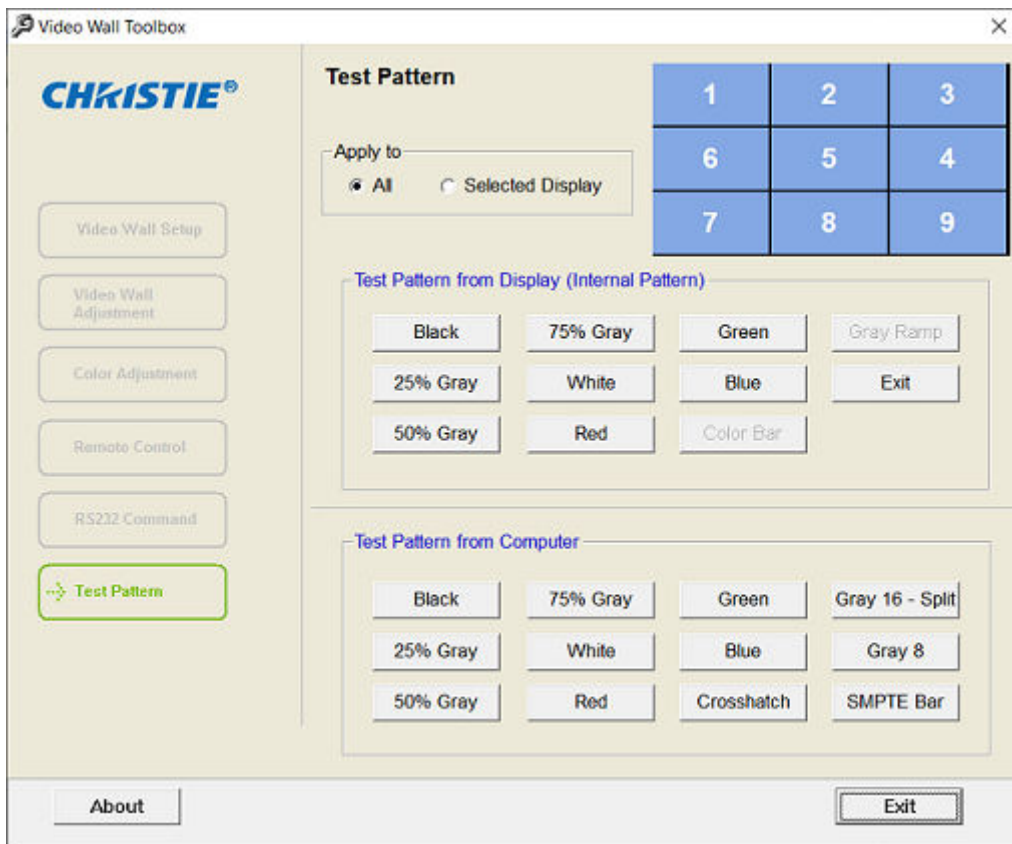
1. On the RS232 Command screen, under Send Command, select **HEX Command**.

2. To select a command type, select **Read** or **Write**.
3. Select the far-left text box then enter 07.
4. In the second text box, enter the Monitor ID.
5. In the third text box, enter 01 for a Read command, or 02 for a Write command.
6. In the next three text boxes, enter the command.
If entering a Write command, enter a parameter value to send with the command.
7. In the far-right text box, enter 08.
8. Select **Send**.
If the command is successfully executed, the command and the response from the target display panel appear in the window.

Generating a test pattern

Learn how to generate a test pattern on a display panel or a video wall using the Video Wall Toolbox application.

1. To select whether to display a test pattern across a video wall or on just one display panel, under Apply To, select **All** or **Selected Display**.
If you chose **Selected Display**, select the Monitor ID for the target display panel.



2. Do one of the following.

- To generate an internal test pattern from a display panel, under Test Pattern from Display, select a test pattern.
- To generate an external test pattern from the control computer, under Test Pattern from Computer, select a test pattern.

Related documentation

Additional information on this product is available in the following documents.

- For installation, setup, and user information, see the product documentation available on the Christie website.
- *Color Matching a Video Wall (P/N: 020-001663-XX)*

Technical support

Technical support for Christie Enterprise products is available at:

- North and South America: +1-800-221-8025 or Support.Americas@christiedigital.com
- Europe, Middle East, and Africa: +44 (0) 1189 778111 or Support.EMEA@christiedigital.com
- Asia Pacific (support.apac@christiedigital.com):
 - Australia: +61 (0)7 3624 4888 or tech-Australia@christiedigital.com
 - China: +86 10 6561 0240 or tech-supportChina@christiedigital.com
 - India: +91 (80) 6708 9999 or tech-India@christiedigital.com
 - Japan: 81-3-3599-7481
 - Singapore: +65 6877-8737 or tech-Singapore@christiedigital.com
 - South Korea: +82 2 702 1601 or tech-Korea@christiedigital.com
- Christie Professional Services: +1-800-550-3061 or NOC@christiedigital.com