

CHRISTIE CRIMSON WU31

Long-lasting brightness and color.
Rock-solid reliability.

Take on large venues and events with the Christie® Crimson WU31 3DLP® laser projectors. Packed full of advanced features - like Christie BoldColor™ Technology and TruLife™ Electronics - and featuring a long-lasting, solid-state laser light source, the Crimson WU31 is your go-to choice when you need your gear to work as hard as you do.



CHRISTIE®

WELCOME A NEW WORKHORSE INTO YOUR STABLE

High-brightness, long-lasting laser light source

The Christie® Crimson WU31 is outfitted with a rock-solid laser light source that produces 30,000 lumens of brightness and provides 20,000 hours of virtually maintenance-free operation.

Christie BoldColor Technology and 3DLP imaging

We combined Christie BoldColor™ Technology with 3DLP® imaging. The result is a color volume far exceeding standard laser phosphor projectors. Visuals are vivid and rich and the perceived contrast is intensified for content that pops off the screen.



Christie TruLife Lite electronics

The Christie TruLife™ Lite electronics platform delivers ultra-high resolution, high-frame-rate video with unprecedented image fidelity. It is optimized for 2K and HD sources and features a floating-point architecture and superior video processing, increased dynamic range and improved scaling.



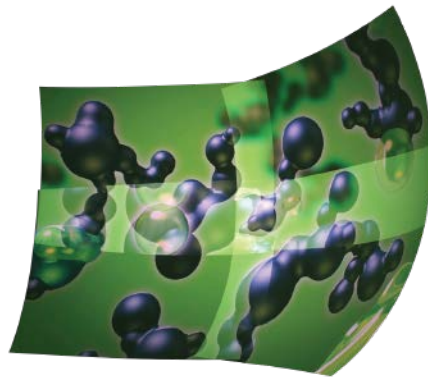
Lens compatibility

No need for new lenses when you have Christie J and M lenses in your inventory. The Crimson WU31 is completely compatible with all existing J and M lenses, including the 0.37:1 ultra-short throw lens.

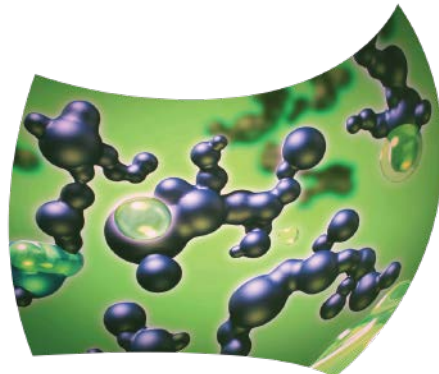


Christie Twist

With built-in Christie Twist™ warp and blend software, Crimson WU31 projectors allow pixels to be mapped more easily onto any projection surface, maintaining proper geometry and accurate pixel-to-pixel alignment.



^ Image on curved screen
- without blending



^ Curved screen
- with blending

Features that fit the way you work

Through trusted relationships with partners and customers, we developed the Crimson WU31 based on real-world user feedback. As a result, each Crimson comes standard with a host of features that make it easier for you to do your job – day in and day out.

- › **Compact, lightweight and rugged design** makes it easy to handle and ship
- › **Omnidirectional operation** for installation flexibility
- › **IP5X-rated light source and sealed DMDs** keep out dust and other contaminants
- › **On-board toolkit** for added convenience
- › **UX-inspired interface** for quick setup and operation
- › **Mechanical shutter** prevents DMD damage from laser light shows
- › **Tool-free optical adjustments** for quick and easy image optimization
- › **Field-replaceable light source** for easy and cost-effective servicing and longer operational life



Superior connectivity

Christie® Crimson features two open option slots. This allows you to choose which optional input cards to use, letting you customize the input configuration to match your needs. The Crimson WU31 also comes standard with the High Bandwidth Multi-Input Card (HBMIC). This specialized option card provides a wide selection of connections for high bandwidth signals including direct fiber input with the Christie Link Transmitter, dual SDI, HDMI™ and DisplayPort™ including compatibility with HDR10.

The Christie advantage

Choosing Christie® gives you access to much more than projectors. We offer complete solutions that include all the components required to stage amazing visual experiences. From design and integration services to a broad range of processing products and specialized set-up tools, we make sure all the details are taken care of.

CHRISTIE® SPYDER

Christie Spyder is simply the most powerful multi-screen windowing processor available. Enjoy the performance, control and flexibility to stage the most spectacular experiences imaginable.

CHRISTIE® terra

Christie Terra® comprises everything required to design and integrate complete SDVoE systems, enabling the streaming and control of audiovisual content, including 4K@60Hz video formats over 10G Ethernet networks.

CHRISTIE® MYSTIQUE

Christie Mystique™ is a full suite of software, hardware and services that removes the technological constraints of fulfilling multi-projector arrays and complex screen set-ups that require expert configuration, alignment, warping and blending. A powerful optional feature of Mystique Install is Guardian. When enabled, Guardian constantly monitors the projected image and is able to automatically detect and correct a system misalignment in real time—quickly, invisibly and without interruption to the content.



Christie Pandoras Box® is a turnkey media server solution that unites state-of-the-art rendering technology with intuitive media and show control.





Technical Specifications

Crimson WU31

Image	brightness	<ul style="list-style-type: none"> • 31,500 ISO lumens • 28,000 ANSI lumens
	contrast	<ul style="list-style-type: none"> • 1800:1
Display technology	type	<ul style="list-style-type: none"> • Dust-sealed 3DLP® 0.96" DMD
	resolution	<ul style="list-style-type: none"> • 1920 x 1200 WUXGA
	output	<ul style="list-style-type: none"> • Up to 60Hz
Illumination	type	<ul style="list-style-type: none"> • Laser phosphor with Christie BoldColor™ Technology utilizing a blue and a red laser
	dust protection	<ul style="list-style-type: none"> • IP5X Rated
	performance	<ul style="list-style-type: none"> • 20,000 hrs to 50% brightness¹
Inputs	input card slots	<ul style="list-style-type: none"> • 2
	standard (HBMIC)	<ul style="list-style-type: none"> • 2 x 12GSDI • 1 x HDMI™ 2.0 • 1 x DisplayPort™ 1.2 • 1 x Christie Link (QSFP+ Fiber) • 1 x HDBaseT
	optional	<ul style="list-style-type: none"> • Dual link DVI input card • Dual 3G/HD/SD-SDI input card • Twin DisplayPort input card • Twin HDMI input card • High Bandwidth Multi-Input Card (HBMIC)
	refresh rates	<ul style="list-style-type: none"> • Up to 60Hz
	video format	<ul style="list-style-type: none"> • Up to 2048 x 1080, 4:4:4, 12bpc
Lens	Fixed lenses	<ul style="list-style-type: none"> • 0.37:1 UST • 0.67:1 • 1.1:1
	Zoom lenses	<ul style="list-style-type: none"> • 0.8-1.16:1 • 1.16-1.49:1 • 1.4-1.8:1 • 1.8-2.6:1 • 2.6-4.1:1 • 4.1-6.9:1 • 6.9-10.4:1
Sound		<ul style="list-style-type: none"> • 51 dBA
Power requirements		<ul style="list-style-type: none"> • Electrical rating: 200-240VAC @ 16A • 2760 watts typical (9418 BTU/hour)
Physical	dimensions	<ul style="list-style-type: none"> • (LxWxH): 37.7 x 25.0 x 11.9" (957 x 635 x 302mm)
	weight	<ul style="list-style-type: none"> • 176.8lbs (80.2kg)
Warranty		<ul style="list-style-type: none"> • Three years parts and labor • Reference the Christie Standard Limited Warranty document for details • Or contact an authorized Christie representative for full details of our limited warranty

¹ At 25° Celsius.

CHRISTIE®

christiedigital.com

For the most current specification information, please visit christiedigital.com

Copyright 2024 Christie Digital Systems USA, Inc. All rights reserved. Our centers of excellence for manufacturing in Kitchener, Ontario, Canada and in Shenzhen, China are ISO 9001:2015 Quality Management System-certified. All brand names and product names are trademarks, registered trademarks or tradenames of their respective holders. "Christie" is a trademark of Christie Digital Systems USA, Inc., registered in the United States of America and certain other countries. DLP® and the DLP logo are registered trademarks of Texas Instruments. Performance specifications are typical. Due to constant research, specifications are subject to change without notice.
CD4474-Crimson-WU31-datasheet-Apr-24-EN



CHRISTIE®